

Teledyne RESON

PLD14840-1

# SeaBat® 7160

## Multibeam Echo Sounder System



The SeaBat 7160 provides an unbeatable combination of range, resolution, portability and powerful features.

The SeaBat 7160 transducer array is comprised of linear receive and transmit arrays mounted together on a support base. The T-shaped array geometry provides the basis for a compact, high-resolution sonar which is easily installed for portable or hull mounts - a first for a high-resolution system in this frequency range. The system features a

pitch-stabilized transmitter and an active roll compensated receiver.

Performance enhancements over the SeaBat 8160 include the addition of 512 high density equi-distant beams, variable swath coverage, beam uncertainty measurement, water column data and many other efficiency enhancing features.

### FEATURES

#### FREQUENCY

44kHz (nominal)

#### SWATH

Swath coverage greater than 4 x water depth

#### DEPTH

Operational depths 10m to 3000m

#### BEAMS

512 Equi-Distant  
150 Equi-Angle

#### FLEXIBLE INSTALLATION

Hull-mount or portable

#### FEATURES

Water column data

Variable and steerable swath

Pitch & Roll stabilization

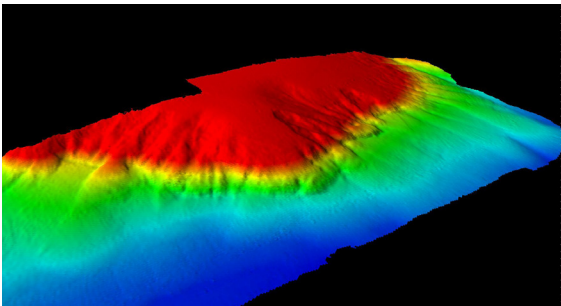
Tracker Autopilot

Adaptive & Manual Gates

Integrated PDS2000 (optional)

## SEABAT 7160 SYSTEM SPECIFICATIONS

Frequency	44kHz (nominal)
Range resolution	12cm
Swath coverage	Greater than 4x water depth
Typical depth	3m to 3000m
Max depth	3000m
Number of beams	512 Equi-Distant / 150 Equi-Angle
Along-track beamwidth	1.5°
Across-track beamwidth	2.0° at nadir (nominal)
Pitch stabilization	±10°
Max update rate	50 Hz
Transducer depth rating	60m
System supply	115V/230V 50/60 Hz,500W
System control	Trackball or from Ethernet
Data output	1GB Ethernet
Data uplink	High-speed digital coax
Temperature: operating, storage	Operating: -5° to +40°C, storage: -30° to +55°C
Transducer array dimension	1477mm x 1100mm x 100mm
Dimension transceiver array	265mm x 483mm x 469mm
Weight hydrophone	34kg (air) / 14.6kg (water) including 15m cable
Weight transmitter	42kg (air) / 17.5kg (water) including 15m cable



## WHY CHOOSE A SEABAT 7160 SYSTEM?

- High-resolution medium depth sonar which is easily installed for portable or hull mounts
- High performance - excellent swath
- High density beams
- Water column data
- Ideal for continental shelf mapping
- Upgrade from SeaBat 8160

For more details visit [www.reson.com](http://www.reson.com) or contact your local Teledyne RESON Office. Teledyne RESON reserves the right to change specifications without notice. 2012©Teledyne RESON

## Teledyne RESON A/S

Denmark  
Tel: +45 4738 0022  
[reson@teledyne-reson.com](mailto:reson@teledyne-reson.com)

## Teledyne RESON Inc.

U.S.A.  
Tel: +1 805 964-6260  
[sales@teledyne-reson.com](mailto:sales@teledyne-reson.com)

## Teledyne RESON LTD.

Scotland U.K.  
Tel: +44 1224 709 900  
[sales@reson.co.uk](mailto:sales@reson.co.uk)

## Teledyne RESON B.V.

The Netherlands  
Tel: +31 (0) 10 245 1500  
[info@reson.nl](mailto:info@reson.nl)

## Teledyne RESON Pte. Ltd.

Singapore  
Tel: +65 6725 9851  
[singapore@teledyne-reson.com](mailto:singapore@teledyne-reson.com)

## Teledyne RESON Shanghai Office

Shanghai  
Tel: +86 21 6473 5403  
[shanghai@teledyne-reson.com](mailto:shanghai@teledyne-reson.com)